

Basic function parameters	
Rated power kW	4.4
Rated voltage V	380
Rated current A	16
Peak current at rated speed A	42
Rated torque Nm	28.4
Peak torque at rated speed Nm	71.1
Rated speed rpm	1500
Max speed rpm	4500
Rotor inertia $\text{kg} \cdot \text{cm}^2$	64.9±10%
Encoder resolution	23bit
insulation class	F(155)
Protection level	IP67
Static torque of brake Nm	/
Brake power supply V	/
Brake backlash <sup>o</sup>	/
duty cycle	S1
Radial load N	≤1470
Axial load N	≤490

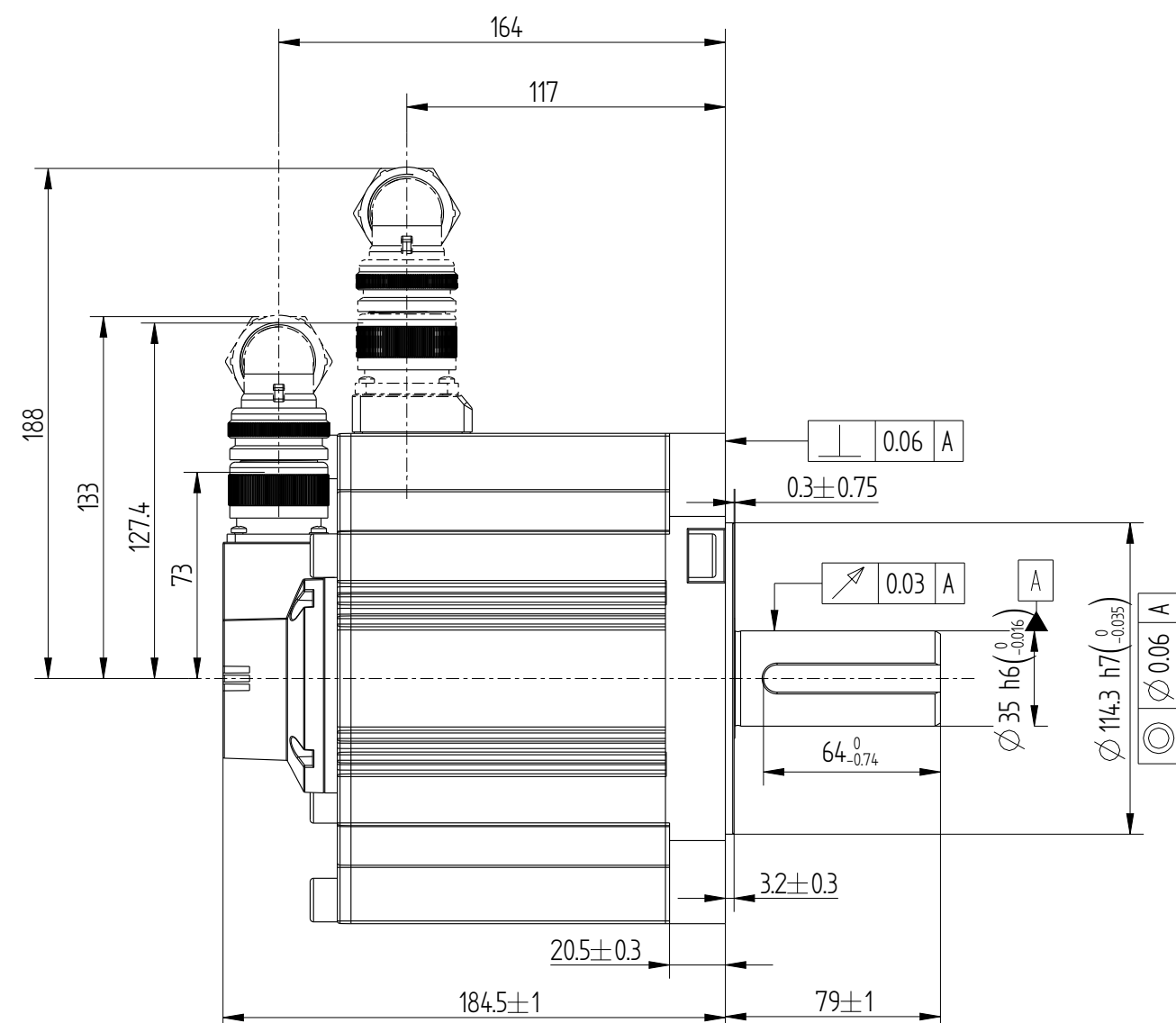
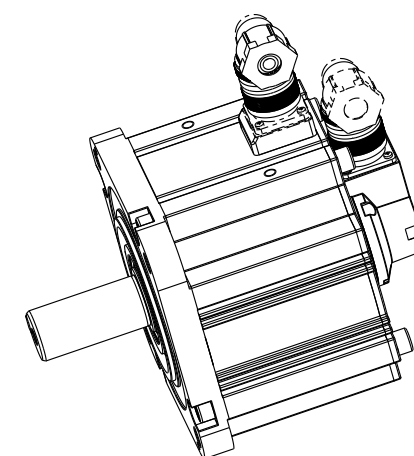
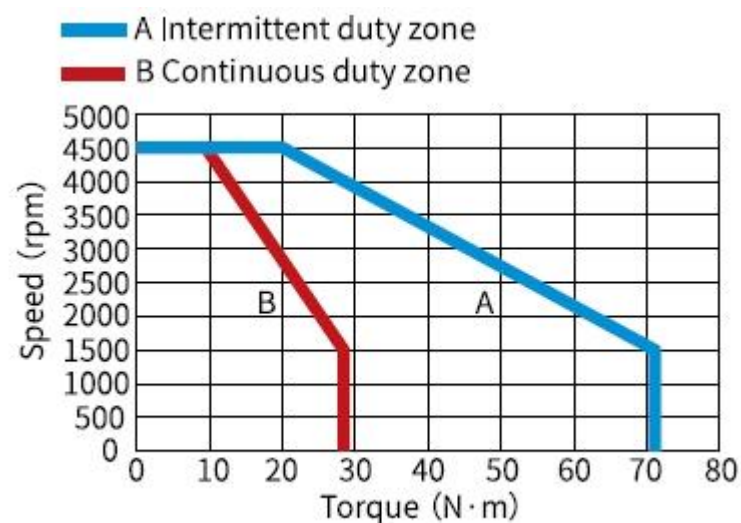
Technical drawing of a pump assembly, showing a top view and a side view.

**Top View Dimensions:**

- Overall square base dimension:  $180 \pm 0.3$
- Central hole diameter:  $\varnothing 200$
- Flange outer diameter:  $\varnothing 207$
- Flange thickness:  $M12 \nabla 25$
- Flange outer radius:  $R30.5$
- Mounting holes:  $4 - \varnothing 13.5EQS$
- Mounting holes:  $2 - M6$

**Side View Dimensions:**

- Angle:  $36.5^\circ$
- Angle:  $45^\circ$
- Motor housing label: SUNCHU

MS1H3-44[15M]-A331R-INT